

Report to the ACEP Council

**The National Emergency Medicine
Political Action Committee (NEMPAC)**

and

The ACEP 911 Legislative Network

**Boston, MA
October, 2015**



NEMPAC

Recognizing the growing importance of PACs in the national political arena, ACEP established the National Emergency Medicine Political Action Committee in 1980. In the past 35 years, NEMPAC has steadily grown to become one of the largest and most effective medical specialty PACs today.

NEMPAC is a voluntary, nonprofit, unincorporated association operating as a segregated fund of ACEP. NEMPAC may solicit, directly or indirectly, and accept voluntary personal contributions from ACEP members, and make expenditures in connection with the election of candidates for federal office.

Currently, NEMPAC is the 4th largest physician specialty PAC and the 5th largest health care professional PAC in the nation. (See Chart A)

2014 Election Cycle Highlights

NEMPAC raised \$2,066,685 in the 2013-2014 election cycle, exceeding our goal of \$2 million by three percent. This generous support from ACEP members allowed NEMPAC to contribute to 218 candidates for the House of Representatives and 30 Senate candidates. The NEMPAC Board of Trustees also approved nearly \$250,000 in independent expenditures for five candidates, all of whom are physicians and won their election to congress, including two emergency physicians, Drs. Joe Heck (R-NV) and Rep. Raul Ruiz (D-CA).

362 NEMPAC contributions were delivered by ACEP members and staff with ACEP members participating in 78 campaign events for federal legislators over the two year cycle.

NEMPAC Fundraising Methods in 2014

NEMPAC check-off on the ACEP dues statement (\$100 suggested in 2014, raised to \$200 as of April 2015 dues statement) – 34%

EM Group efforts – 20%

Email solicitations/on-line giving/peer to peer efforts by NEMPAC Board – 14%

Direct mail and phone solicitation conducted by National Capital Teleservices (CapTel) – 12.5%

Fundraising efforts during ACEP meetings (LAC and SA) – 9.5%

2015 Fundraising Campaign

From January 1 through September 24, 2015, NEMPAC raised \$705,978 from 3,676 members. Our goal is to again exceed \$1 million in 2015 and raise more than \$2 million for the 2015-16 election cycle to impact more congressional races and represent the interests of emergency physicians in the political process as never before.

The number of “Give-A-Shift” (\$1,200 and above) donors continues to grow exponentially. In 2004, 70 ACEP members contributed at the “Give-a-Shift” level. As of September, 465 ACEP members are donating at the “Give-a-Shift” level. Our goal by year-end is 500 Give-a-Shift donors including residents (the “Give-a-Shift” level for residents is \$120).

In 2009, we instituted the “*Five Year Give-a-Shift*” level which recognized 71 ACEP members. Today, we have 120 ACEP members at this level, an increase from 109 in 2014 or 10%.

In 2014, we began to recognize “10 Year Give-a-Shift” donors. Currently, there are 91 ACEP members at this level. This is an increase from 62 in 2014 or 47%.

NEMPAC Honor Roll

The Board of Trustees of the National Emergency Medicine Political Action Committee (NEMPAC) would like to thank the following ACEP members for their generous support.

Ten Year “Give-a-Shift” Donors

These members have donated at the Give-a-Shift level (\$1,000) annually for the past ten years or a cumulative total of \$10,000 in the same time period.

Miguel A Acevedo Segui, MD, FACEP	Ramon W Johnson, MD, FACEP
Andrew Luke Aswegan, MD, FACEP	Nicholas John Jouriles, MD, FACEP
Bruce S Auerbach, MD, FACEP	Jay A Kaplan, MD, FACEP
Rashid J Baddoura, MD, FACEP	Kevin Michael Klauer, DO, FACEP
Dominic Joseph Bagnoli, Jr, MD, FACEP	David N Klein, MD, FACEP
Brien Alfred Barnewolt, MD, FACEP	Linda L Lawrence, MD, FACEP
Andrew I Bern, MD, FACEP	Jorge Lopez-Ferrer, MD, FACEP
Michael D Bishop, MD, FACEP	Sharon E Mace, MD, FACEP
Frederick C Blum, MD, FACEP	Robert T Malinowski, MD, FACEP
Brooks F Bock, MD, FACEP	Catherine Anna Marco, MD, FACEP
Bradford J Bowls, MD, FACEP	John S Milne, MD, MBA, FACEP
Mary Catherine Burke, MD, FACEP	James C Mitchiner, MD, MPH, FACEP
Joseph J Calabro, DO, FACEP	John C Moorhead, MD, FACEP
Michael L Carius, MD, FACEP	Ira R Nemeth, MD, FACEP
Michael Cetta, MD, FACEP	Jeffrey R Nickel, MD, FACEP
Kahang Lee Chan, MD, FACEP	David C Packo, MD, FACEP
L Anthony Cirillo, MD, FACEP	Ernest Page, II, MD, FACEP
Marco Coppola, DO, FACEP	Orlee Israeli Panitch, MD, FACEP
Kathleen Cowling, DO, FACEP	Lee E Payne, MD, FACEP
James Michael Cusick, MD, FACEP	W Randall Poole, MD, FACEP
Marc M Dreier, MD, FACEP	John H Proctor, MD, MBA, FACEP
Irv E Edwards, MD, FACEP	Maritza Rodriguez, MD, FACEP
Angelo L Falcone, MD, FACEP	Alexander Max Rosenau, DO, FACEP
William Basil Felegi, DO, FACEP	David William Ross, DO, FACEP
Diana L Fite, MD, FACEP	Sandra M Schneider, MD, FACEP
Kelly Foley, MD, FACEP	Regan Andre Schwartz, MD, FACEP
Scott H Freedman, MD, FACEP	David Charles Seaberg, MD, CPE, FACEP
Vidor E Friedman, MD, FACEP	David P Sklar, MD, FACEP
Wayne S Friestad, MD, FACEP	Virgil W Smaltz, MD, MPA, FACEP
Brett A Gamma, MD, FACEP	Aaron M Snyder, MD, FACEP
Angela F Gardner, MD, FACEP	Robert C Solomon, MD, FACEP
Brent F Gardner, MD, FACEP	Steven Joseph Stack, MD, FACEP
Michael Joseph Gerardi, MD, FACEP	Richard L Stennes, MD, MBA, FACEP
Andrea L Green, MD, FACEP	Robert Eduard Suter, DO, MHA, FACEP
Hugh F Hill, III, MD, JD, FACEP	Mary Jo Wagner, MD, FACEP
Lisa Dianne Hrutkay, DO, FACEP	Matthew J Watson, MD, FACEP
Peter J Jacoby, MD, FACEP	Deborah E Weber, MD, FACEP

Arlo F Weltge, MD, MPH, FACEP
David E Wilcox, MD, FACEP

Dean Wilkerson, JD, MBA, CAE

Five Year “Give-a-Shift” Donors.

These members have donated at the Give-a-Shift level (\$1,000) annually for the past five years or a cumulative total of \$5,000 in the same time period.

Ademola Adewale, MD
James B Aiken, MD, MHA, FACEP
Jim V Antinori, MD, FACEP
Brahim Ardolic, MD, FACEP
Benjamin D Armstrong, MD
Brent Asplin, MD, MPH, FACEP
Neal Finley Aulick, II, MD, FACEP
Benjamin Bernstein, MD, FACEP
Michael Bessette, MD, FACEP
Dale Scott Birenbaum, MD, FACEP
Ethan A Booker, MD, FACEP
Samuel Francis Bosco, MD, FACEP
Alkesh Brahmhatt, DO
Sabina A Braithwaite, MD, FACEP
Amabel-Jovan C Cabatu, MD, FACEP
Jordan GR Celeste, MD
Leonardo Cisneros, DO, FACEP
R Carter Clements, MD, FACEP
Randal L Dabbs, MD, FACEP
Carrie de Moor, MD, FACEP
Paul DePonte, DO
Heather Lynn Farley, MD, FACEP
John T Finnell, II, MD, FACEP
Juan Francisco Fitz, MD, FACEP
Daniel Freess, MD, FACEP
Vicki Kay Friend, DO, FACEP
William Stephen Gallea, MD, FACEP
Ann Marie Garritano, MD, FACEP
David Andrew Goldman, DO, FACEP
Michael A Granovsky, MD, FACEP
Stephen A D Grant, MD, FACEP
Kelly Gray-Eurom, MD, MMM, FACEP
Robert D Greenberg, MD, FACEP
Michael Gary Guttenberg, DO, FACEP
Alison Haddock, MD, FACEP
Russell H Harris, MD, FACEP
Anthony William Hartmann, MD, FACEP
William C Haselow, MD, FACEP
Carlton E Heine, MD, PhD, FACEP
Douglas M Hill, DO, FACEP
Jon Mark Hirshon, MD, MPH, PhD, FACEP
Larry Allen Hobbs, MD, FACEP
Kenneth L Holbert, MD, FACEP

Hans Roberts House, MD, FACEP
Raymond Iannaccone, MD, FACEP
David Peter John, MD, FACEP
Costas Andreas Kaiafas, MD
Steven B Kailes, MD, FACEP
Christopher S Kang, MD, FACEP
Gary R Katz, MD, MBA, FACEP
Noah L Keller, DO, FACEP
Paul Daniel Kivela, MD, MBA, FACEP
Heidi C Knowles, MD, FACEP
Terry Kowalenko, MD, FACEP
Paul Andrew Kozak, MD, FACEP
Mark S Kruger, MD, FACEP
Michael Lozano, MD, FACEP
Thomas W Lukens, MD, PhD, FACEP
Nathan Raymond MacDonald, MD, FACEP
H Lynn Massingale, MD, FACEP
John Matheson, MD, FACEP
Angela F Mattke, MD, FACEP
David S McClellan, MD, FACEP
Michael McCrea, MD, FACEP
Dennis Lucas McGill, MD, FACEP
John Gerard McManus, Jr, MD, FACEP
David A Milbrandt, MD, FACEP
Thomas R Mitchell, MD, FACEP
George W Molzen, MD, FACEP
Kevin Monfette, MD, FACEP
Joshua B Moskovitz, MD, MPH, FACEP
John Bruce Moskow, MD, FACEP
Carla Elizabeth Murphy, DO, FACEP
Steven Nazario, MD, FACEP
Patricia Nichols, MD
Brian Nobie, MD, FACEP
Craig Norquist, MD, FACEP
Ramon Nunez, MD, FACEP
Robert E O'Connor, MD, MPH, FACEP
Lisa Marie O'Grady, MD, FACEP
Ketan Pandya, MD, FACEP
Rebecca B Parker, MD, FACEP
Laura C Parnell, MD, FACEP
Charles F Pattavina, MD, FACEP
Daniel Eugene Peckenpaugh, MD, FACEP
Nathan Phillip Peimann, MD, FACEP

Vanessa C Peluso, MD, FACEP
Alberto Perez, MD, FACEP
Ari M Perkins, MD, FACEP
David J Pillow, Jr, MD, FACEP
Ericka Powell, MD, FACEP
Allen L Roberts, MD, FACEP
Richard Dean Robinson, MD, FACEP
John J Rogers, MD, FACEP
Matthew Rudy, MD
Tracy G Sanson, MD, FACEP
Marc Santambrosio, DO, FACEP
David D Sarkarati, DO, FACEP
Luke Chris Saski, MD, FACEP
Nathaniel R Schlicher, MD, JD, FACEP
Gregory L Shangold, MD, FACEP
Weylin Sing, DO, FACEP
Siva Sivanesan, MD, FACEP
Todd Slesinger, MD, FACEP

Peter Erik Sokolove, MD, FACEP
Gary C Starr, MD, FACEP
Lawrence M Stock, MD, FACEP
David FE Stuhlmiller, MD, FACEP
Thomas Jerome Sugarman, MD, FACEP
Christine Sullivan, MD, FACEP
Brian Sutton, MD, FACEP
Timothy Scott Talbot, MD, FACEP
Douglas N Tannas, MD, FACEP
Jeremy David Tucker, DO
Joseph Adrian Tyndall, MD, FACEP
Bradford L Walters, MD, FACEP
Daniel R Wehner, MD, MBA, FACEP
Richard Preston Wendell, MD, FACEP
Mildred J Willy, MD, FACEP
Gary David Zimmer, MD, FACEP
Andrew R Zinkel, MD, FACEP

Outstanding EM Group Contributors in 2014

The ACEP Board of Directors and the NEMPAC Board of Trustees recognizes the following EM physician groups for their efforts to encourage their ACEP member physicians to contribute to NEMPAC to unify and strengthen the voice of emergency medicine in the political process.

Large Group Practices

CEP America
EmCare
Emergency Medicine Physicians (EMP)
TeamHealth

Small/Mid-Size Group Practices

Eastside Emergency
Florida Emergency Physicians (FEP)
Medical Emergency Professionals (MEP)
Mid-Atlantic Emergency Medicine Association (MEMA)
Wake Emergency Physicians, PA

New Donor Levels

The NEMPAC Board of Trustees recently approved new donor recognition levels for NEMPAC to correspond with ACEP member categories and increased participation by NEMPAC donors in the installment giving option. The levels were effective January, 2015.

Platinum - \$2500 annually (one-time donation, \$210/monthly or \$625/quarterly)

Give-a-Shift - \$1200 annually (one-time donation, \$100/monthly or \$300/quarterly)

Sterling - \$600 annually (one-time donation, \$50/monthly or \$150 quarterly)

NEMPAC VIP - \$365 annually (one-time donation, \$30 month or \$90 quarterly) This category is open to everyone but of special benefit to resident members transitioning in their first three years of practice and retired members who would receive all Give-a-Shift benefits when donating at this rate.

Resident Give-a-Shift - \$120 annually (one time donation, \$12 month or \$40 quarterly)

Resident Sterling - \$60 Annual Contribution (no breakdown offered)

NEMPAC Supporter – any other amount less than \$365 for member or less than \$60 for Residents or Fellows

NEMPAC check-off on the ACEP dues statement

At the October 24, 2014 meeting, the ACEP Board of Directors approved a request by the NEMPAC Board of Trustees for an increase in the NEMPAC contribution on the ACEP annual dues statement from \$100 to \$200 effective in April, 2015.

The check-off was last increased by ACEP Board approval in January, 2006 from \$50 to \$100.

Since the new suggested NEMPAC donation amount on the dues statement was increased in April dues statements, we have seen an increase in the amount raised from this method. \$235,718 was raised from April to the September with an average donation of \$90.

Political Donations to Candidates

NEMPAC serves a vital role in advancing ACEP’s legislative agenda and in broadening ACEP’s visibility with Congress. NEMPAC’s growth has allowed us to be involved in more congressional races and has expanded our influence on Capitol Hill.

How does NEMPAC determine whom to support?

The NEMPAC Board of Trustees, comprised of ACEP members, approves a candidate budget for each election cycle. Evaluation criteria is based on the candidate’s or Member’s support of ACEP’s legislative priorities. Other factors considered include the Member’s committee assignment, leadership position and difficulty of his/her election campaign. We also rely on the input of ACEP state chapter leadership, individual 911 Network members, and NEMPAC supporters when evaluating open seat and challenger races.

Key issues that shaping NEMPAC contribution decisions are support or “co-sponsorship” of ACEP-endorsed legislation including EMTALA liability relief legislation (H.R. 836/S. 691), support of mental health legislation to end the practice of psychiatric boarding in EDs, and preserving critical funding for trauma, EMSC, Graduate Medical Education, Medicare, Medicaid and emergency preparedness programs, as well as other issues that merit support.

Organization	2013 Hard	2013 Soft	2014 Hard	2014 Soft	2014 Cycle Total (Hard and Soft)	2014 Cycle Disbursements	Year Created	# Eligible	% Participation
American Society of Anesthesiologists	\$ 1,830,000	\$ 45,000	\$ 1,934,221	\$ 36,746	\$ 3,845,967	\$ 3,800,000	1991	7,867	20.3%
American Dental Association	\$ 1,311,766	\$ 464,463	\$ 1,347,615	\$ 535,520	\$ 3,659,364	\$ 1,427,100	1969	157,000	18.0%
American Assn of Orthopaedic Surgeons	\$ 1,245,697	\$ 518,944	\$ 1,298,612	\$ 474,816	\$ 3,538,070	\$ 2,313,300	1999	18,431	21.0%
American College of Radiology	\$ 1,324,056	\$ 68,652	\$ 1,319,306	\$ 65,000	\$ 2,777,014	\$ 1,833,500	1999	23,000	15.0%
American College of Emergency Physicians	\$ 1,000,844	\$ 77,599	\$ 922,963	\$ 64,559	\$ 2,065,965	\$ 1,936,367	1980	22,000	23.0%
American Academy of Ophthalmology	\$ 657,000	\$ 167,000	\$ 507,000	\$ 198,000	\$ 1,529,000	\$ 1,415,000	1987	18,572	17.0%
American Academy of Dermatology Assn	\$ 564,537	\$ 54,860	\$ 797,149	\$ 67,236	\$ 1,483,782	\$ 1,437,879	2000	13,231	10.0%
The American College of Ob-Gyns	\$ 580,500	\$ 73,000	\$ 652,400	\$ 56,000	\$ 1,361,900	\$ 1,115,000	2001	44,000	10.0%
American College of Surgeons	\$ 512,587	\$ 93,562	\$ 529,422	\$ 60,575	\$ 1,196,146	\$ 885,000	2002	60,000	3.3%
American College of Cardiology	\$ 455,020	\$ 58,420	\$ 425,104	\$ 54,969	\$ 993,513	\$ 874,000	2002	35,000	5.2%
American Academy of Family Physicians	\$ 396,495	\$ 38,506	\$ 464,526	\$ 33,055	\$ 932,582	\$ 838,000	2005	66,000	5.2%
American Osteopathic Association	\$ 428,516	\$ 28,834	\$ 401,831	\$ 20,214	\$ 879,395	\$ 823,997	1979	52,000	3%
American Academy of Neurology	\$ 290,146	\$ 13,465	\$ 305,450	\$ 15,717	\$ 624,778	\$ 620,350	2007	16,500	7.8%
American Assn of Neurological Surgeons	\$ 204,428	\$ 19,150	\$ 164,674	\$ 26,150	\$ 414,402	\$ 415,000	2006	5,200	11.0%
American College of Physicians	\$ 165,822		\$ 161,309	\$ -	\$ 327,131	\$ 297,750	2004	100,000	<1%
American Society for Radiation Oncology	\$ 157,968	\$ 4,975	\$ 141,505	\$ 18,650	\$ 323,098	\$ 293,825	2003	4,500	8.5%
American Urological Association	\$ 247,000	\$ 37,000	\$ 195,800	\$ 124,000	\$ 284,000	\$ 271,200	1991	13,500	2.5%
American College of Rheumatology	\$ 130,030	\$ 2,075	\$ 135,202	\$ 1,000	\$ 268,307	\$ 113,000	2007	7,453	3.8%
Society of Thoracic Surgeons	\$ 78,591	\$ 7,800	\$ 127,038	\$ 10,930	\$ 224,359	\$ 197,500		5,400	7%
American Academy of Otolaryngology-HNS	\$ 175,632	\$ 8,085	\$ 173,202	\$ 51,021	\$ 224,223	\$ 193,500	1995	9,600	11.0%
Society for Vascular Surgery	\$ 97,000		\$ 113,100		\$ 210,100	\$ 83,000	2002	4,000	7.0%
American Society of Plastic Surgeons	\$ 186,356	\$ 16,915			\$ 203,271		1991	6,000	11.7%

The 911 Legislative Network

Along with NEMPAC, the 911 Legislative Network plays a significant role in promoting ACEP's legislative agenda to Congress. When ACEP recognized that it was competing for federal legislators' time and attention in an environment burgeoning with important legislative issues, ACEP's Federal Government Affairs Committee and the Board of Directors voted to create a technically sophisticated grassroots network. Launched in April 1998, the 911 Legislative Network encourages ACEP members to cultivate relationships with their federal legislators for long term, ongoing lobbying and educational efforts. The goal is to have emergency physicians across the country available as resources and healthcare issue experts for federal legislators. As "citizen lobbyists," 911 Network members carry ACEP's concerns directly to policy makers and staff to explain how legislation or regulation affects medical care provided in an emergency department. ACEP provides the tools and the training to help 911 Legislative Network members effectively communicate with their legislators.

"Triple E Campaign: Expand – Enhance – Engage"

In May of 2015, ACEP, under the leadership of Dr. Andy Bern, launched the "Triple E Campaign: Expand – Enhance – Engage" for the 911 Legislative Grassroots Network.

In order to effectively engage with Congress and elected leaders across the country, we are seeking to:

- double participation overall in the 911 Network
- cover each U.S. Congressional district by identifying at least one Team Captain or Member
- identify a State Leader for each Chapter.

During ACEP15, special recognition will be given to Chapters that have the greatest percentage of members participating in the Network and the greatest number of active participants in the 911 Network.

Chapters can also receive points for publishing articles about or promoting the 911 Legislative Grassroots Network. Additional credit will be given for filling roles of team captain and state and regional leaders.

Other metrics include:

- number of new members signed up in each Chapter
- percentage of Chapter members participating in the Network;
- number of activities/actions undertaken by Chapter members;
- number of Chapter members that attended the Washington, D.C. [Legislative Advocacy Conference and Leadership Summit \(LACLS\)](#);
- number of Councillors at [ACEP15 in Boston](#) who join or are active members of the Network;
- hosting or participating in an [ED visit](#) for a legislator or their staff;
- delivering a [National Emergency Medicine PAC](#) (NEMPAC) check at a local fundraising event for their legislator;
- participation in tele forums on a specific legislative issue to learn more and how to take action; and
- meeting locally with legislators.

Hosting an ED Visit for Your Legislator

An important component of the 911 Network is the ED visit program for legislators. Throughout the past three years, ACEP staff has worked with Soapbox Consulting to increase the number of targeted, coordinated ED visits hosted by ACEP members for members of Congress and their staff resulting in a 30% increase. Our goal is 40 visits in the FY2016.

The program is ongoing and we urge you to contact the ACEP Washington DC office if you would like to host a visit for your federal legislator.

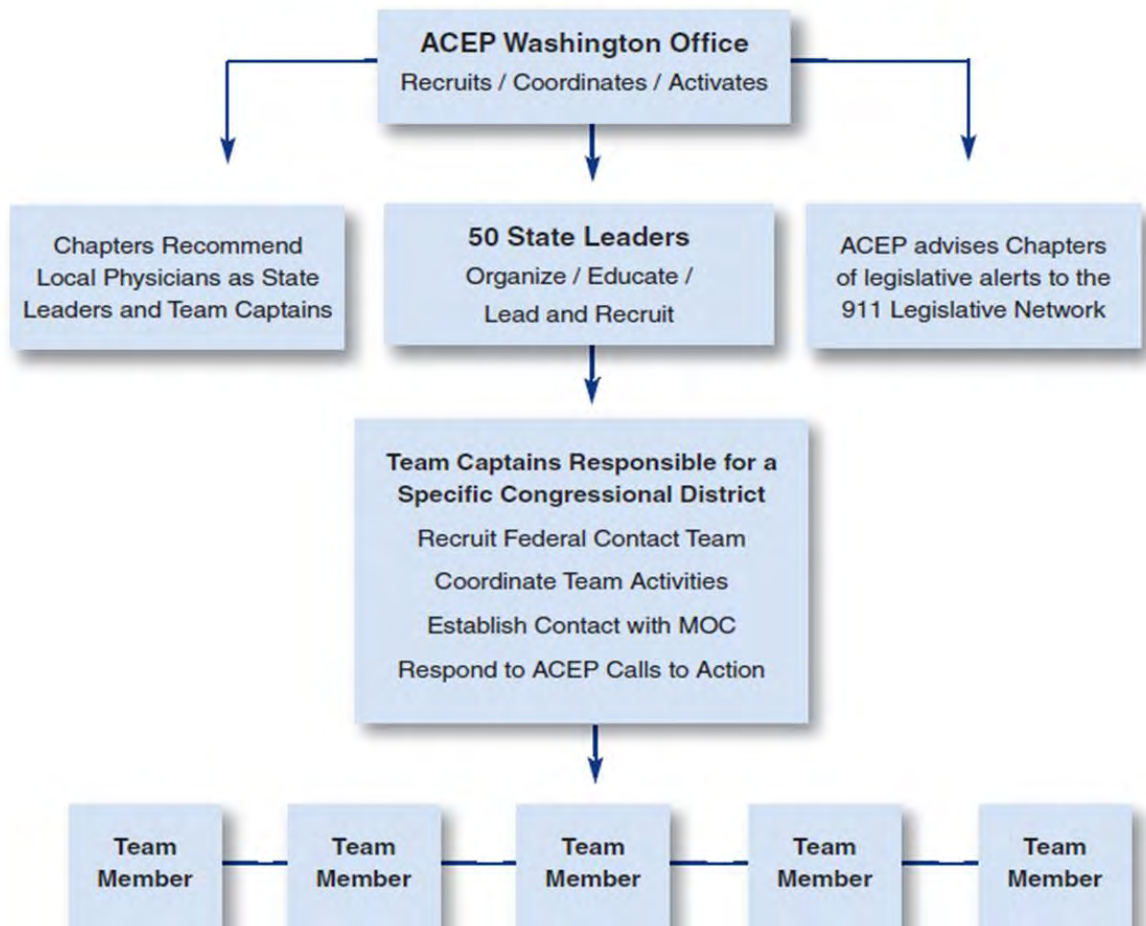
911 Network Member of the Year

Each year, a “911 Network Member of the Year” is selected from among the most active advocates in the Network based on a accrued point system which includes attending events, hosting ED visits, responding to action alerts and recruiting new members to the Network. **The 2015 winner is Dr. Arlo Weltge from Texas.**

As leaders of ACEP, it is important that members of the Council participate in the 911 Legislative Network. Councillors are well informed about the issues facing emergency medicine and ACEP’s efforts to promote the specialty. This makes members of the Council the perfect spokes persons to carry ACEP’s message to their legislators. **ACEP’s goal is to achieve 100% Councillor participation in the ACEP 911 Network.**

NEMPAC and the 911 Legislative Network help promote the specialty of emergency medicine. We thank the Councillors for their past support and encourage all members of the Council to contribute to NEMPAC and sign up for the 911 Legislative Network. Your participation will help ensure the future of our specialty and our patients.

**ACEP’s ASAE Award Winning
911 Legislative Grassroots Network**



2015 COUNCIL CHALLENGE

“GIVE-A-SHIFT” TO THE 2015 NEMPAC CAMPAIGN

Invest in the Future of Emergency Medicine

ACEP’s Political Action Committee (PAC) helps keep emergency medicine front and center during important health care negotiations in Congress.

NEMPAC’s accomplishments in 2015

- Worked with the AMA and other medical specialty organizations to repeal the flawed Medicare Sustainable Growth Rate (SGR) formula and replace it with a payment system that rewards quality, efficiency, and innovation;
- Led and supported the re-introduction of medical liability reform bills including legislation to provide liability protections for EMTALA-related care, safe harbor legislation, and Good Samaritan liability protections;
- Worked with the lead sponsors of comprehensive mental health reform legislation in the House and Senate on provisions to help reduce psychiatric boarding in the ED;
- Hosted fundraising events for five U.S. Senators and one U.S. Representative during the ACEP 2015 Legislative Advocacy Conference and Leadership Summit (LACLS) in Washington, D.C. which were attended by nearly 80 ACEP members; and
- Supported the attendance of ACEP members at 60 fundraising events in local U.S. Congressional districts for pro-emergency medicine Members of Congress.



Why is your personal donation as a Councillor important?

All ACEP Board members and the NEMPAC Board of Trustees are Give-a-Shift Donors. Please join our commitment to remain in the top tier of all medical PACs and increase our political clout in the 2016 elections.

Your support and leadership in NEMPAC sends a critical message to the membership about the need to maintain a robust PAC to distinguish our specialty from the rest of the “PACs”.

And, not one penny of your dues can be spent for direct political contributions.

Visit the NEMPAC table outside of the Council Meeting to make a contribution.

There are options to assist you in participating at the “Give-A-Shift” level including installment giving plans.

Platinum - \$2,500 annually (one-time donation, \$210/monthly or \$625/quarterly)

Give-a-Shift - \$1,200 annually (one-time donation, \$100/monthly or \$300/quarterly)

Transitioning Give-a-Shift - \$365 annually (one-time donation, \$30/monthly or \$90/quarterly)

This category is open to donors with transitioning membership rates to receive full Give-a-Shift benefits (residency to attending status, and those retiring from active practice.)

Resident Give-a-Shift - \$120 annually (one-time donation, \$12/monthly or \$30/quarterly)

Contributions or gifts to NEMPAC are voluntary and not tax deductible for federal income tax purposes. The amount given or refusal to donate will not benefit or disadvantage you.

NEMPAC ACTIVITIES AT ACEP15

Council Challenge

Boston Convention Center Council Meeting

Saturday, October 24 - Sunday, October 25

All State Delegations and Sections who reach 100% NEMPAC participation by 4 PM on Sunday during the Council Challenge will be entered into a drawing.

Councillors from the winning state or section will be invited to attend all NEMPAC VIP events listed above, regardless of the amount of their donation.



NEMPAC VIP Reception

John F. Kennedy Presidential Library & Museum

Sunday, October 25

7:00 PM – 9:00 PM

“Give-a-Shift” donors (\$1,200 annually, Residents \$120) and one guest

“Sterling” donors (\$600 to \$1199, Residents \$60) – donor only

Shuttle transportation provided.



NEMPAC VIP Donor Suite

(Open to “Give-a-Shift” and “Sterling” Donors)

North Lobby, BCEC

Monday, October 26 - Wednesday, October 28

8:00 am – 4:00 pm

Complimentary breakfast, lunch, & snacks provided.

A professional shoulder or neck massage and complimentary use of laptop computers, printers, and television will be offered.



Access Pass required for all NEMPAC-related events.

NEMPAC/USACS PAC Fundraising Receptions

NEMPAC and USACS PAC are co-hosting fundraising receptions for two emergency physicians running for Congress.

A separate donation to each of the campaigns is required for attendance.

Rep. Joe Heck (R-NV) for U.S. Senate

Birch Bar, Westin Waterfront Hotel

Sunday, October 25

9:00 PM – 10:00 PM



Rep. Raul Ruiz (D-CA)

NEMPAC VIP Donor Lounge

Monday, October 26

9:30 PM – 10:30 AM

